

JS Analytical

reliably accurate



www.jsanalytical.com

Obsnap
the professional



Industrial, Laboratory & Production Equipment

Sesotec is a global leader in the development and manufacturing of detection and separation systems with significant expertise in a wide spectrum of technology and a product range that is almost unrivalled in versatility and quality. Sesotec supplies systems for all process stages, product types, and conveying types, as well as for all the critical control points of the production process from one source: Magnet Systems, inductive Metal Detectors and Separators and X-Ray Scanners.

RAYCON EX1

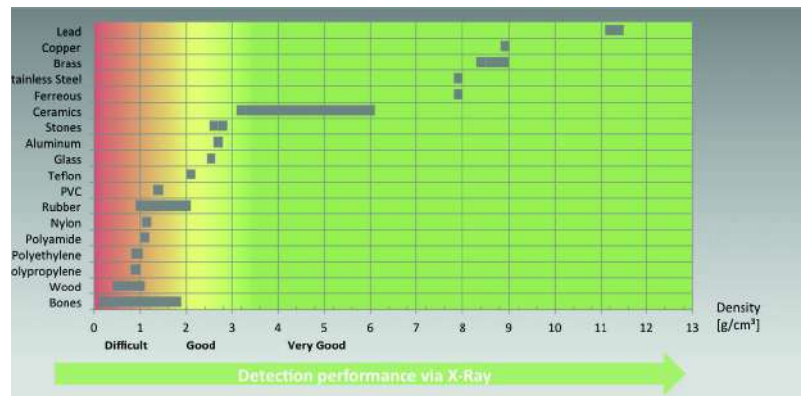
Product inspection system for slim and packaged products

The RAYCON EX1 product inspection system detects all contaminants that due to their density, chemical composition, or mechanical dimensions absorb X-rays better than the surrounding product. For example this applies to metal, glass, ceramic, and stone contaminants in food materials. The RAYCON system also detects some types of plastics (e.g. PVC, rubber) as well as other product defects (e.g. trapped air, filling level).



The RAYCON EX1 product inspection system is characterised by the following performance features:

- Inspection area: 220/120 (W x H)
- Throughput: ~220 pcs./min. (product specific)
- Detection capability starting from Ø 0.6mm
- 60W Low-Energy X-Ray generator
- Highest operator safety due to low X-Ray emission < 0.5µSv/h
- Total length of 800mm only
- Modular and stable frame design allows easy transportation and safe installation
- Ambient temperatures from 0°C to +40°C
- IP 54 protection class
- Reject system: signal only (for customer specific reject systems)



Detectability of different materials depending on their density

Software Advantages

Evaluation software

The product inspection system is equipped with a high-performance industry-type PC with real-time operating system and sophisticated visualisation software.

The system is operated by way of a 10" – LCD monitor with touch-screen.

X-ray images are evaluated by means of a product-specific visualisation software. Contaminated or defective products are detected and separated.

User Interface

Drag & Drop menus

The operator receives a visual feedback instantly

- time saving

Menu Guide

The operator is guided by the software through necessary steps of product setup or troubleshooting

- time saving

Easiest and fastest product setup

Autolearn with 5 product samples only

- startup in less than 2 minutes

Retrain for automatic sensitivity adjustment.

software increases/decreases sensitivity automatically due to operators command by just marking the x-ray image with fingers

- saves time consuming adjustments



RAYCON D+

Intelligent X-Ray product inspection system for packaged products

With its optical capabilities using Dual-Energy technology the performance for soft containments gets extremely improved for materials e.g. types of plastics (PVC, aso.), rubber, ceramics, stones, calcified stones and similar materials.



The Raycon D+ product inspection system is characterised by the following features:

- Throughput: ~250pcs./min. (product specific)
- Detection capability starting from Ø 0.3mm
- 200W long life x-ray generator
- Highest operator safety due to low x-ray emission <math><0.5\mu\text{Sv/h}</math>
- Modular and stable frame design allows easy transportation and safe installation
- Ambient temperatures from 0°C to +40°C
- IP 66 protection class within conveyor area

Key Benefits

Longer lifetime of core components by Intelligent Power Management (IPM)

- Automatic detection of product height
- Automatic power adjustment of x-ray source
- Extended lifetime of x-ray source
- Increase of energy efficiency
- Maximum sensitivity without special settings
- Time-saving during the learning process of different products

Application variability

- Modular design allows adaptation to various applications
- Depending on machine configuration, foreign bodies are detected from 0.3mm
- Modular principle enables fast, uncomplicated and cost-transparent upgrades
- Platform concept enables subsequent updates
- Hygienic design for easy cleaning
- Tool-free belt change within 2 minutes
- HD (High Definition): Detects foreign bodies from 0.3mm (e.g. stainless steel, steel, copper, glass, ...)
- Dual energy: Detects soft impurities from 2.0mm (e.g. bones, rubber, ...)

Surpassing Detection Requirements

- Surpasses the latest and verified food regulations by up to 400%
- False reject rate (FRR) below 0.01%
- System detects products up to conveying speed of 1m/s
- Maximum throughput: 250 pieces/minute

Increased ease of use

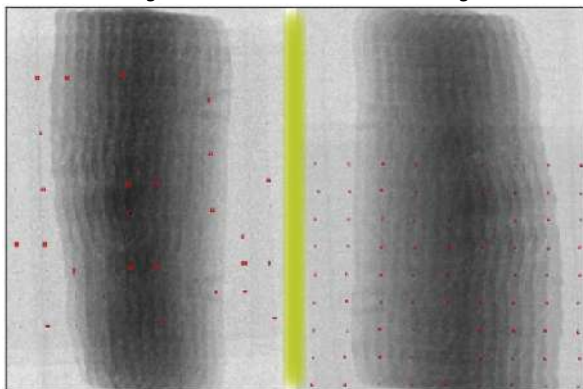
- 15" HD touch display in 16:9 widescreen format offers excellent picture quality
- No special operating knowledge necessary
- Automatic recognition of product packaging by the edge filter
- Minimizing the frequency of false rejects and product wastage
- Automatic detection of x-ray source lifetime and early warning system

Technology comparison

HD resolution vs. Dual Energy

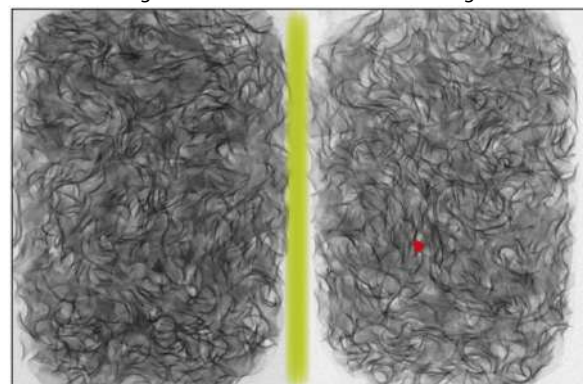
Sensitivity:

Conventional systems 30% found foreign bodies	RAYCON D+ HD 100% found foreign bodies
---	--



Sliced bacon with 0.3mm stainless steel impurities

Conventional systems 0% found foreign bodies	RAYCON D+ Dual Energy 100% found foreign bodies
--	---



Noodles with glass splinter 2mm x 3mm (W x L)



FOR BULK MATERIALS

Systems with eject flap or swivel funnel are used for the separation of metal contaminants from bulk materials in free fall. Using easily available standard connections such systems can be easily integrated into existing pipes. Our sophisticated design prevents backjamming, clogging, the formation of material deposits, allows thorough and time-saving inside cleaning. All the system components are designed to meet the stringent hygiene requirements in the food industry.

RAPID 5000



Metal separator for high hygiene free-fall applications with reject flap ("Quick Flap System"). This separation principle has proved to be especially suitable for powdery and finegrained bulk materials.

RAPID 6000 AND RAPID 8000



Metal separators for free-fall applications with swivel funnel. This separation principle has proved to be especially suitable for coarsegrained, flaky, light, fibrous, brittle, and moist bulk materials. RAPID 8000 series is designed for very high throughput rates.

GF 4000



GF 4000 metal separator for pneumatically conveyed bulk materials, e.g. granulate, powder, or flour, with eject flap ("Quick Flap System"), suitable for high conveying speeds.

MAGBOX FOOD



The MAGBOX pipe magnet for free-fall applications primarily is used in the food industry, the pharmaceutical industry, and in similar sensitive applications.

FOR LIQUID AND PASTY PRODUCTS

Metal separators for the inspection of liquid and pasty products such as soups, sauces, sausage meat, or jam, can be easily integrated in existing pipes by way of standardised thread systems.

LIQUIMAG



Filter magnets of type LIQUIMAG were specifically developed and designed for the purpose of reliably separating the finest magnetic contaminants from a wide range of pumped liquid and pasty products.

LIQUISCAN VF+



The LIQUISCAN VF+ metal separator for filler applications is installed at vacuum fillers or pumps. It is delivered on a mobile, height adjustable stand. The low and well balanced centre of gravity makes the system highly stable especially when it needs to be moved.

LIQUISCAN PL



The LIQUISCAN PL metal separator for pumped products is integrated in pipes. It comes in a special-steel frame for table or wall mounting. As an option this separator also is available mounted on a mobile, height-adjustable stand.

Metal detection system detects all metallic contaminations (steel, special steel, aluminium and others). Including metal contaminations that are enclosed within the product. It is used for inspecting packed and unpacked piece goods.



PERFORMANCE FEATURES

- Highest sensitivity to all metals (2-channel technology)
- State-of-the-art microprocessor technology with selfmonitoring, auto-balancing, and temperature compensation
- Product compensation with auto-learn function
- Multi-product memory
- Password protection / access protection
- Special EMC combifilter for suppressing external interference
- Surfaces and design comply with the hygiene requirements of the food industry
- Complies with IFS and HACCP
- Highest scanning sensitivity
- Wiring complying with hygiene requirements



Swivel arm



Air blast nozzle



Pusher



Drop flap



Swivel funnel



Retracting belt



Separating systems

To avoid the necessity of manualoperator action in case of metal detection, the detectors can be combined with automatic separating systems. Since the design of such separating systems must consider a great variety of parameters (product distance, shape, size, nature, conveying speed, minimum ejection, function monitoring, etc.) Sesotec offers separating systems in various design versions.

Process security in plastics processing. For over 30 years, Sesotec has been providing the plastics industry with cost-effective, tried and tested solutions. We cover every stage in the process from manufacturing granulate through to finished products and on to recycling. Sesotec metal detectors and separators identify and remove all metals, not only magnetic but stainless steel, aluminium, copper, brass and lead; irrespective of whether they are in pure form, bonded, coated, lacquered, insulated or even embedded in other materials. Magnetic separators are an effective complement in the pre-removal of ferrous metal and magnetic steel particles. Sesotec develops individual machines and systems in close cooperation with its customers; the result is effective and consistent operation, easy installation and commissioning with minimal maintenance requirements.

Effective and reliable detection and removal of

- magnetic metals
- non-magnetic metals (copper, brass, stainless steel etc)

Additional benefits

- reliable machine protection
- increased productivity
- reduced reject products
- increased product quality

Seamless integration

- into every stage of the process
- into every type of conveying system
- plug and play board replacement
- customised design

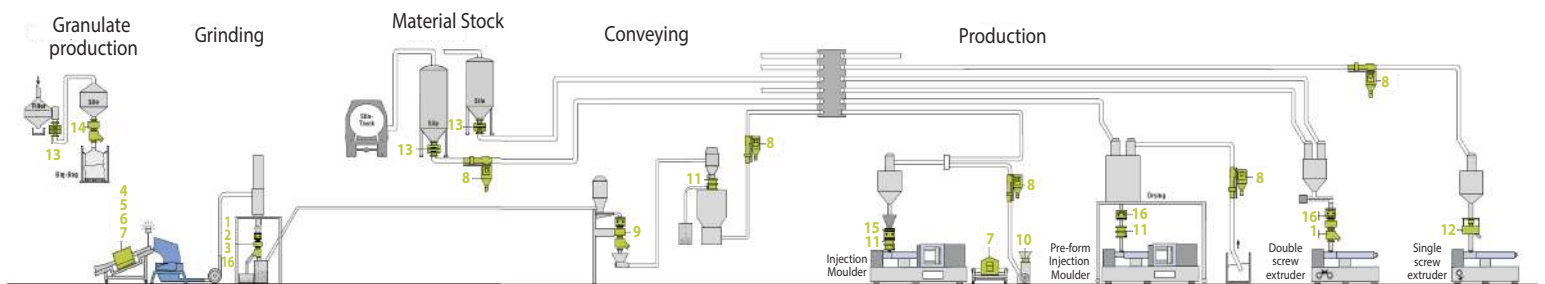
Highly developed technology

- product effect compensation
- digital signal processing
- automatic teach-in
- multi-product memory
- simple to operate

Total project support

- project consultation and analysis
- product trials and test machinery
- training and seminars
- worldwide after-sales service

SEPARATING MAGNETIC AND NON-MAGNETIC METALS



Metal-free sprue and parts recycling

Sesotec metal detectors are widely used in the reprocessing of production waste (in-house recycling) or in specialist recycling facilities. They can be built into feeder conveyors to protect downstream milling machinery. Additionally they prevent larger pieces of metal from being shredded and thereby prevent tiny fragments of metal being spread throughout the granulate.



RAPID VARIO-FS Metal Separator

Compact free-fall separation system. Metal contaminants are rejected via the rejection flap of the "Quick Flap System" without disrupting the material flow.



RAPID 4000-FS Metal Separator

Metal separator with highest sensitivity for free-fall applications.



RAPID DUAL Metal Separator

Metal separator used to inspect slowly moving bulk material such as foil flakes as well as large streams.



ELS Metal Detector

Single face ELS metal detectors are installed directly underneath the belt of a conveyor where the depth of conveyed material is shallow ie closeto the belt. A typical application is the inspection of sprues to protect auger granulators. ELS can also be used to inspect the quality of plastic components to ensure the core is not broken



Metal Detector DLS with PLASTICON

Conveyor Belt System; has a separable tunnel metal detectors of type DLS can be installed in (existing) conveyor belts and guarantee highest detection accuracy throughout the whole aperture area. DLS metal detectors typically are used for the protection of cutting mills and shredders. Conveyor belt systems of the PLASTICON series (conveyor belts with integrated metal detectors) specifically are designed for the protection of comminution machines.



ELCON Metal Detector

Suitable for small conveyor belts and materials up to 100 mm height.

Metal-free material handling in pipelines

Metal separators are often used in freefall applications and pneumatic conveying pipelines. A specially-designed, fast-reacting reject flap ("Quick Flap System") removes metal contamination from bulk materials with minimal loss of good material. Magnetic separators installed in pipelines work as stand-alone devices or to support inductive metal detectors.



GF Metal Separator
These metal separators are designed to be installed in horizontal, vertical or inclined vacuum and pressure pipes. Detection and removal of contaminants is effective even at high speeds and rejected material is removed into a container with no interruption to material flow.



PRESEP Metal Separator
Designed for highly contaminated material; neodymium magnets first separate all metallic contaminants before the metal separator removes all non magnetic contamination.



P-SCAN Metal Detector
Metal detector can be installed in pipelines e.g. for free-fall applications, pneumatic or vacuum pipelines. Extremely compact through its reduced metal-free zone.



GLS Metal Detector
Conveyor belt metal detector with high sensitivity to detect bead wire breaks in plastic particles.



MAGBOX Inline magnet
Magnet system to separate even smallest contaminants; Easy integration into existing pipelines.



PRO-SENSE Metal Separator
Metal separator with highest scanning sensitivity for all metals due to innovative HRF technology (High Resolution Frequency). The modular system design allows optimal adaptation to customer- and materialspecific requirements.

Metal-free extruding, injection and blow moulding

The following inline magnets and metal separators are installed directly at the material infeed of extruders, injection moulding and blow moulding machinery and remove metal particles from a slowly downward-moving column of material. However they will also consistently remove metals from free-falling granulate, not only at the initial fill but also at subsequent top-ups. They provide maximum machine protection ("Last Chance Controller") and prevent metering screw failures, nozzle blockages and damage to tooling. Due to their compact design, heavy conveying, mixing or dosing equipment can be attached to these units.



Metal separators of the PROTECTOR series
Metal separators for applications with lower material throughput rates that are installed at the inlet of processing machines. The PROTECTOR series covers various application fields - standard, highest scanning sensitivity, or high temperature applications



Metal Separator PROTECTOR-MF
This range of equipment is primarily for processing machinery with larger material infeeds and therefore higher throughputs. The pneumatically-driven reject system guarantees effective and reliable separation.



SAFEMAG Inline magnet
The compact and sturdy design (60 mm) guarantees secure separation without abrasion.



EXTRACTOR-J Inline magnet
Magnetic separator for Jacob pipelines; Inspects granulates of up to 10 mm.





Established in 1959; X-rite is the global leader in color science and technology. X-rite's expertise in inspiring, selecting, measuring, formulating and matching colour helps users to get their colour right the first time and every-time, which translates to better quality and reduced costs.

Portable Imaging Spectrocolorimeter



Color QC program for Appliances & Housewares, Soft & Hard Home Products, Building Materials, Toys, Consumer Electronics, Accessories, Food & Baker Products, Plastics, Apparel / Textiles, Paints & Coatings, allows you to:

Measuring geometrics
Light source

Illuminant / Observer
Standard / Sample storage
Measuring area
Short term repeatability
Data interface

45/0 image capture
Independent tri-directional 25 LED
(8* visible wavelengths; 1* UV)
D65/10 and A/10
30/350
4 & 8mm
Typical 0.10 DE 94 on white (D65/10)
USB (Mass Storage Device)



RM200QC provides accurate L*a*b*C*H* standard, sample and color difference values.



Gray Scale and Strength functions are included for textile assessment. RM200QC offers superior ergonomics for this application and improved performance (compared to visual evaluation).



Verbal color descriptions help to understand and describe the direction of color difference.



On board Opacity measurement provides accurate and flexible functionality for coatings and plastics.



Customer was satisfied on our Spectrocolorimeter RM200QC

Portable Spectrophotometers



The Ci6X series provide absolute and difference measurements for the following colorimetric systems. These values can be obtained from any of nine illuminants with 2° or 10° observer angle: L*a*b*, ΔL*Δa*Δb*, L*C*H°, ΔL*ΔC*ΔH°, ΔE*, ΔECMC, ΔE CIE94 and XYZ. Whiteness and yellowness per ASTM E313-98, Metamerism Index and DIN 6172

- Correlated 60° gloss value
- Opacity and color strength measurement & shade sorting
- Simultaneous measurement of both specular component included SPIN & specular component excluded SPEX
- Pass / Fail mode
- Quick color compare



Easy to use – straight forward main menu with model dependent options to measure, to run a predefined job or to calibrate the device (Ci64 Shown)



Results at a glance – the instrument could either show detailed color comparison data for the analyst



Just simplified and straight forward pass fail indication for the production user.

Model	Ci60	Ci62	Ci64	Ci64UV
Optical Aperture	8mm measurement area	Choice of Optical Aperture : 4mm measurement area or 8mm measurement area	Choice of Optical Aperture – Switchable Aperture 4mm measurement area and 8mm measurement area or 14mm measurement area	Choice of Optical Aperture – Switchable Aperture 4mm measurement or 8mm measurement area
Light Source	Gas-filled tungsten lamp	Gas-filled tungsten lamp	Gas-filled tungsten lamp	Gas-filled tungsten lamp + UV LEDs Adjustable UV Content
Inter-Instrument Agreement	Avg. 0.40 ΔE*ab based on avg. of 12 BCRA Series II tiles	Avg. 0.20 ΔE*ab based on avg. of 12 BCRA Series II tiles	Inter-instrument Agreement 8mm or 14mm Avg. 0.13 ΔE*ab based on avg. of 12 BCRA Series II tiles 4mm Avg. 0.2 ΔE*ab based on avg. of 12 BCRA Series II tiles	Inter-instrument Agreement 8mm Avg. 0.13 ΔE*ab based on avg. of 12 BCRA Series II tiles 4mm Avg. 0.2 ΔE*ab based on avg. of 12 BCRA Series II tiles
Short-term Repeatability	.10 ΔE*ab on white ceramic	.05 ΔE*ab on white ceramic	.04 ΔE*ab on white ceramic	.04 ΔE*ab on white ceramic
Data Interface		USB 2.0	USB 2.0	USB 2.0

Multi-Angle Spectrophotometer



MA98 - can measure in-plane and out-of-plane angles that meet the ASTM standard (E2539) for measuring interference pigments

A rugged, compact design for fast, precise colour measurement information on metallic, pearlescent and special effect finishes. Its full range of angular viewing ensures complete, accurate results that reduce downtime and wasted material; anywhere from the lab to the production line to QC operations and shipping.

The X-Color QC® is a software that enhances process recording, reporting and control to ensure consistency.

Model	MA94	MA96	MA98
Illumination	45° tungsten halogen module	45° tungsten halogen module	45° and 15° tungsten halogen modules
Battery life	Up to 1500 measurements, Li ion dual battery packs		
Inter-instrument agreement	0.18 ΔE* avg. on BCRA		
Repeatability	0.03 avg. ΔE* white ceramic		
Aspecular angles	5 Aspecular angles: 15, 25, 45, 75, 110	6 Aspecular angles: -15, 15, 25, 45, 75, 110	6 Aspecular angles (45): -15, 15, 25, 45, 75, 110 2 Aspecular angles (15): -15, 15 Out of plane angles
Full color display	2.7 inch backlit full color LCD (6.85 cm)		
Memory	250 standards, 1000 samples internal		
Software	XColorQC™		
Colorimetric illuminants	A, C, D50, D65, F2, F7, F11 & F12		
Colorimetric standard observers	2° & 10°		
Colorimetric scales	L*a*b*, L*C*H°, ΔE*, ΔECMC, ΔE DIN6175, ΔE2000		
Standards	ASTM : D 2244, E 308, E 1164, E 2194, E 2539 (MA98 Only) DIN : 5033, 6174, 6175-2 ISO : 7724 SAE : J1545		

MA-T6 / T12 Portable Multi-Angle Spectrophotometer



MA-T6 :

A new design featuring an RGB colour camera and 6 angles of measurements makes the MA-T6 a significant upgrade that will deliver more precise measurements and ensure your conformance with even the tightest tolerances.

MA-T12 :

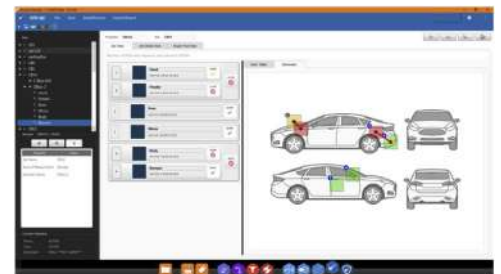
The RGB colour camera coupled with 12 angles of measurement makes this instrument the preferred choice for establishing the strictest colour standards.



Live preview ensures accurate targeting



Intuitive touch screen makes measurement easy



Real-time monitoring of colour harmony for adjacent parts with EFX QC

Highlights

- EFX QC software, included with the MA-Tx, is a cloud-based solution that simplifies the process of defining, communicating and ensuring conformance with standards and measurement procedures for colour, sparkle and coarseness across distributed supply chains
- Precise readings of coloured sparkle and coarseness make repeatability and reproducibility more than twice as good as that of other devices on the market, minimizing waste and re-work across the production process
- Results you expect -- measurements that more closely approximate the way the eyes perceive colour -- streamlines the approval process
- Intuitive interface reduces the learning curve and increases measurement efficiency
- Automatic internal calibration reduces the risk of inaccurate measurements due to insufficient device calibration, and limits the need for external calibration to once per month
- Backwards compatibility with X-Rite MA68, MA94, MA96 and MA98 ensures a smooth transition with no loss of legacy data
- The ability to set and digitally communicate global tolerances and measurement procedures for colour, sparkle and coarseness across the supply chain improves ongoing performance
- Real-time monitoring of colour harmony across the supply chain enables quick adjustments to improve operating efficiencies
- New visual tools enable quick analysis and resolution for non-compliant products

Specifications	MA-T6 / MA-T12	
Measurement Geometry	6 measurement angles (6 illumination sources, 1 pick-up)	12 measurement angles (12 illumination sources, 2 pick-ups)*
Inter-Instrument Agreement	0.18 ΔE2000 avg. on BCRA	
Illumination Source	Polychromatic white LED with blue enhancement	
Illumination Spot Size	9mm x 12mm (.40in x .50in)	
Illuminants	A, C, D50, D65, F2, F7, F11 & F1	
Colour Differences	L*a*b*, L*C*h°, ΔE*, ΔECMC; ΔE DIN6175, ΔE2000	
Short-Term Repeatability on white	0.02 ΔE* (10 consecutive measurements on white tile)	
Reproducibility on BCRA Tiles	Grey BCRA tiles: avg. ΔE00 < 0.10	
Sparkle Measurement	Sparkle Grade, Color Sparkle Parameter, Illumination 15as-15, 15as15, 15as-30, 15as45, 15as80, 15d Diffuse Coarseness	
Sparkle Repeatability & Reproducibility	0.12% (mean error on median %) & 1.9% (mean error on median %)	
Coarseness Repeatability & Reproducibility	0.09% (mean error on median %) & 1.4% (mean error on median %)	

*MA-T12 only

X-Rite Judge QC Light Booth



Lighting the Way to Accurate Colour

In manufacturing and quality control across all industries, accurate colour is important. When colour does not meet specifications, the result is increased cost and time to market, and more rejects and rework. That's why it is important to have good processes in place for visual evaluation of colour. One way to improve consistency is by ensuring that colour is viewed under the best possible lighting conditions.



Judge QC panel with lamp service indicator

Consider Metamerism and Optical Brighteners

Metamerism is a phenomenon that occurs when objects match in one light source, but not in another. This commonly occurs when dyes, paints or pigments are changed during production. To check for metamerism, view your samples under a variety of different light sources. The Judge QC light booth includes tungsten (A) lamps, the primary light source used for metamerism comparison.

The Judge QC's UV lamps should be used when samples contain optical brightening agents (OBA). OBAs are used to achieve a "whiter-than-white" effect on a range of materials, including plastics, paints and coatings and paper. If the lighting condition is not correct, the whites - and any colour that gets applied to the material or fabric - will not be consistent and will fail to meet expectations. The Judge QC's UV illumination allows for accurate visual evaluation of OBA-enhanced materials.

Judging Colour Effectively

- Achieve better colour evaluation of materials and products with consistent lighting
- Benefit from robust, industrial construction that will serve you for years to come
- Always know exactly how functional the Judge QC lamps are with its new convenient lamp service indicator
- Consistent fluorescent illumination that complies with major international standards such as ISO, ASTM, DIN, ANSI and BSI visual assessment requirements
- Dedicated D50 light source for print and packaging applications; dedicated D65 light source for industrial applications. Tungsten (A), UV and fluorescent light also included. New Dual Daylight mode enables easy switching between D50 and D65 light sources in situations where operators may need to view samples under both lighting conditions.

Judge QC Specifications	Judge QC	Judge QC (Dual Daylight)
Model	5 Switch Membrane	5 Switch Membrane
Dimensions (H x W x D)	21.5in x 27in x 21in / 54.5cm x 68.5cm x 53.5cm	21.5in x 27in x 21in / 54.5cm x 68.5cm x 53.5cm
Viewing Area (H x W x D)	15in x 25in x 18.5in / 38cm x 63.5cm x 47cm	15in x 25in x 18.5in / 38cm x 63.5cm x 47cm
Weight	60lbs / 27kg	60lbs / 27kg
Electrical	Multi Voltage 100, 115, 127 and 230	Multi Voltage 100, 115, 127 and 230
Material	Steel	Steel
Total Light Sources	5	5
Daylight 5000K	Option 1	✓
Daylight 6500K	Option 1	✓
"A" Tungsten Halogen (home light)	✓	✓
Cool White Fluorescent	✓	✓
Ultraviolet	✓	✓
TL84	Option 2	Option 1
U30	Option 2	Option 1
U35 Fluorescent	Option 2	Option 1
Cabinet Colour	Munsell N7	Munsell N7
Switch Panel	Micro Switch with Overlay	Micro Switch with Overlay
Lamp Timer	Daylight source or 12 months	Daylight source or 12 months
Recommended Hours	2000	2000
Service Indicator	✓	✓



D65



D50



STORE



HOME



LAMP VIEW

MetaVue VS3200 Imaging Spectrophotometer

Overview

For industrial applications in coatings, plastics, food, cosmetics and more, accurate, consistent colour is vital. Whether measuring plastic parts, liquids, powders or gels, this versatile, non-contact imaging spectrophotometer can speed up colour formulation, production colour checks and quality control operations, reducing waste and rework while shrinking cycle time. This is especially important in environments with frequent production colour changes.

Key Benefits

Manufacturers can take advantage of MetaVue VS3200's non-contact imaging to measure difficult samples such as small and non-planar items as well as liquids, pastes, powders and gels without contaminating the instrument.



Measurement Type	Image or Spot
Measurement Geometry	45/0 imaging spectrophotometer
Inter-Instrument Agreement	0.15 avg. CIELAB
Spectral Range	400-700 nm @ 10nm
White Repeatability	0.025 CIELAB
Aperture Sizes	2 to 12 mm
Sample Holder	Location-Aware
Lamp Life	350,000 measurements
Measurement Cycle Time	<10 seconds
Measurement Activation	Software or Button
Industry Standards	ASTM D2244, ASTM E179, ASTM E308, ASTM E1164, CIE 15, DIN 5033 Teil 7, DIN 5036, DIN 6174, ISO 7724, JIS Z 8722
Correlation to X-Rite 45/0 industrial instruments	Yes

X-Rite Ci™4200 / Ci™4200UV Benchtop Spectrophotometer

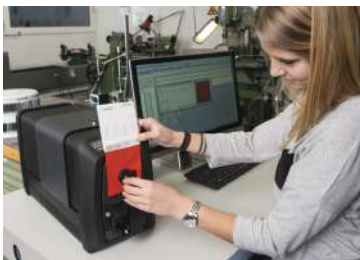


A reliable and accurate benchtop spectrophotometer that serves as the foundation for operations seeking to establish a color control program

- Data compatibility with X-Rite sphere handhelds
- Available with calibrated UV to maintain accurate measurements between optically brightened samples
- Correlated 60° gloss value
- Simultaneous SCI/SCE measurement in 2 seconds

Measuring Geometrics :	d/8°, DRS spectral engine, Simultaneous SPIN / SPEX
Optical Aperture :	8mm measurement area 14mm target window
Light Source :	Gas-filled tungsten lamp UVLEDs (Ci4200UV)
Spectral Range :	400 – 700nm
Spectral Interval :	10nm – measured
Measurement Range :	0 to 200% reflectance
Inter-Instrument Agreement :	Avg. 0.20 ΔE*ab based on avg. of 12 BCRA Series II tiles
Short-Term Repeatability :	.05 ΔE*ab on white ceramic

High Performance Benchtop Spectrophotometer



A full-featured reference instrument for reliable digital workflow and error-free measurement of textile, plastic, coated, liquid, and brightened samples.

- Premium reference grade. Enables a reliable, global digital workflow
- Simultaneously measure SCI/SCE and calibrated UV control
- Complete auto-configuration simplifies setup and eliminates measurement errors
- Reflectance and transmittance
- Remote standard, trial, and preview buttons
- LED status panel uniquely warns you when you are at risk

Specification/Model	Ci7600	Ci7800
Repeatability (white tile)*	0.03 RMS ΔECIE lab	0.01 RMS ΔECIE lab
Inter-Instrument Agreement*	Avg E CIE lab* 0.15 ΔECIE lab	0.08 Avg ΔECIE lab
Illumination	Plused Xenon, D65 Calibrated	Plused Xenon, D65 Calibrated
Spectra Range	360nm -750nm	360nm-780nm
Wavelength Interval	10 nm	10 nm
Reflectance Apertures	25mm, 10mm, 6mm, 17**, 3.5**	25mm, 17mm, 10mm, 6mm, 3.5mm
Total Transmittance Apertures	22mm, 10mm, 6mm	22mm, 17mm, 10mm, 6mm
Internal Temp. & Humidity Sensor	✓	✓
420 UV, 460 UV Cutoff	Option	Option
Special Features	Simultaneous SCI/SCE automated UV and lens control	Simultaneous SCI/SCE automated UV and lens control, digital signature embed NetProfiler, horizontal or vertical measurement orientation

Standards Compliance

The X-Rite Ci7800 and Ci7600 benchtop spectrophotometers are compliant with the following standards:

- CIE No. 15
- ASTM D1003
- ASTM E1164
- DIN 5033 Teil 7
- JIS Z 8722
- ISO 7724/1

Our Esteemed Customers





One of the most well-known European companies in the field of Analytical instrumentation. For more than 25 years of continuous effort and activity, it brought the company to reach a prominent place among the most important world-wide manufacturers of optical and emission spectrometers.

DFS-R500 Optical Emission Spectrometer (OES)



DFS-R500 SPECTROMETER – has perfectly proved itself as a reliable analytical tool.

It provides the analysis of ferrous and non-ferrous metals and alloys for all alloying elements and impurities, including sulphur, phosphorus and carbon.

Purpose:

- Melted metal composition monitoring;
- Incoming inspection of supplied materials;



(On the top)
DFS-R500 Sample Stand

(Right) DFS-R500 Special Adaptors



DFS-R500V OES with additional external stand



DFS-R500V SPECTROMETER – allows users to analyse samples that are difficult to place on the standard table of spectrometer **DFS-R500** due to their weight or size.

The external stand provides an analysis of the ferrous and non-ferrous metals on all elements and impurities except Sulfur and Phosphorus.



DFS-R500V's External Stand

In addition to a standard sample stand, the external stand allows users to analyse various shapes and dimensions.



DFS-R500 & DFS-R500V SPECTROMETER TECHNICAL CHARACTERISTICS

Spectral Range, nm	173-420, with a possibility of installation of the additional channel of sodium 598 nm. Advance version: 173-840
Polychromator	Argon Purging
Focal length, mm	500
Sample Stand	With argon purging; the additional external stand for the analysis of large-size and heavy samples and structure is possible.
Cable length of the remote module, m	2.5
Dimension, mm (Including the holder)	(L) 810 x (W) 525 x (H) 975
Weight, kg	80 kg



One of the most well-known European companies in the field of Analytical instrumentation. For more than 25 years of continuous effort and activity, it brought the company to reach a prominent place among the most important world-wide manufacturers of optical and emission spectrometers.

MFS-R11 OES for Engines and Other Mechanisms Diagnostics



MFS-R11 – allows analysis of products' wear & deterioration process of engines and other mechanisms in lubricated oil.

The spectrometer is used for diagnostics of engines, transmissions, other mechanisms of planes, locomotives, trucks, tractors, etc.

No purge using argon is required for operation.



Oils are analyzed using the rotating electrode.

MFS-R12 OES for Material Analysis



MFS-R12 – is designed for analysis of different powders, geological, ferrous and non ferrous metal samples of various shape and size.

Spectrometer doesn't require argon.



The spectrometer sample stand is designed to handle samples and electrodes in the form of rods and bars, with coal electrodes of various shapes.



This sample stand is completed with a special vice for work with large samples and samples with complex configuration.

SPECTROMETER TECHNICAL CHARACTERISTICS

MFS-R11

Spectral Range, nm	190-420, with a possibility of installation of the additional channel of sodium 589 nm. Advanced version: 173-840
Polychromator	Air
Focal length, mm	500
Sample Stand	Specialised stand with rotating disk for oil analysis
Dimension, mm (Including the holder)	(L) 865 x (W) 525 x (H) 1065
Weight, kg	85 kg

MFS-R12

Spectral Range, nm	190-420, with a possibility of installation of the additional channel of sodium 589 nm. Advanced version: 173-840
Polychromator	Air
Focal length, mm	500
Sample Stand	Allows analysis on both, powder samples from the carbon electrode channel, and metal samples of various shapes.
Dimension, mm (Including the holder)	(L) 650 x (W) 525 x (H) 1070
Weight, kg	85 kg



Establish in 1992, more than 20 years in the market. It has 56 pattern technologies. Skyray has taken its foothold in independent scientific innovation to develop a high-tech, high precision analytical equipment and instrumentation globally.

EXPLORER 5000 Handheld Alloy & Stainless Steel / Mineral Analyzer

EXPLORER 5000 can make accurate and nondestructive detection on a variety of precious metal alloys, low alloy steel, stainless steel, tool steel, chrome / molybdenum steel, nickel alloys, cobalt alloys, nickel / cobalt-resistant alloys, titanium, copper alloy, bronze, zinc alloy, tungsten alloy, etc. You can identify material composition and alloy grade in two seconds. Rapid detection on aluminum and magnesium alloy grades allows to make reliable identification and confirmation of the material (PMI) for quick and reliable Quality Control.

Advantages

Easy Operation



- Lightweight, small size, ergonomic handle design, equipped with a special instrument case, which is easier to grasp and more convenient to use in the field
- 5-inch high-definition screen with 360 degree rotation, multiple-point operation and can display clearly in any lighting
- Integrated design of seal type, with waterproof and dustproof function, can be used continuously in harsh environments
- No need for sample preparation, can directly measure and analyse the surfaces of goods which need to be tested. The instrument can do a quick measurement by its handheld benefit and accurately test the samples for a long time by its test block.

Better Performance



- Rapid nondestructive detection and quick measurement with results within two seconds. With performance similar to most benchtop XRF Models, Explorer XRF sets a new standard for Handheld XRF Analyzers
- Fast analysis of Ti, V, Cr, Mn, Fe, Co, Ni, Cu, Zn, Ga, Ge, Zr, Nb, Mo, Ru, Rh, Pd, Ag, In, Sn, Sb, Hf, Ta, W, Re, Pt, Au, Pb, Bi, Mg, Al, Si, P, S. Other elements can be easily added as per customers' application
- Instrument can run without helium by the ultra near optical path design and can detect light elements from the beginning of Mg that fully meets the needs of specific users

Higher Configuration



- Four core parts, which are miniature x-ray tubes, fast SDD detector, digital signal processor and multichannel intelligent analysis module, can achieve accuracy as good as bench-top versions
- Skyray patented digital multi-channel technology features up to 500K CPS (spectral counts per second)
- Automatic collimators and filters make Explorer able to analyze different applications and ensure Explorer can meet many testing requirements
- Users can observe samples position at any time thanks to built-in 5 megapixel HD camera

Safer Protection



- Intelligent multi-colour warning system without dead angles; green for standby/power on, red flashing means testing, and yellow flashing means equipment malfunction
- Multiple safety protection features:
 - a: X-Ray tube shuts off automatically without sample
 - b: Thick steel structure with heavy lead coating prevents any X-Ray leaking
 - c: Rubber shield prevents X-Ray scattering
- Linkage-locking device protects the final checkpoint if the software is unable to control the instrument

Stronger Battery

- Large lithium battery at 27000mAh could be a selected configuration; the battery duration working time is up to three days, and is equipped with a communicator and car charger to ensure a continuous power supply
- A built-in memory battery can continue replacing the battery power

Specifications

Analytical Method	Energy dispersive X-ray fluorescence
Elements Measuring Range	Atomic number from 12 to 92 [elements from magnesium (Mg) to uranium (U)] can be measured
Simultaneous Detector Elements	Simultaneous analysis of 40 elements
Microcomputer System	Customised system ; CPU: 1G ; system memory: 1G ; extended storage maximum support: 32G ; standard 4G for mass storage data
Content Range	ppm ~ 99.99%
Detection Time	1 ~ 60 seconds (per second report results)
Built-in System(s)	GPS, WiFi, Bluetooth
Power Supply	Rechargeable lithium battery: 9000mAh standard, sustainable up to 12 hours ; optional 27000mAh superbattery with wide voltage 110V ~ 220V universal adapter for recharging power supply
Detection Objective	Solid, liquid, powder
Detector	SDD detector of fast SDD detector (optional)
Detector Resolution	Can reach 128eV (minimum)
Excitation Source	50kV / 200µA - silver target end window integrated miniature X-ray tube and high-voltage power supply
Collimator(s) and Filter(s)	Collimator diameters are 4.0mm and 2.0mm, 6 kinds of filters with automatic switching functions
Video System	5 megapixel high-resolution camera
Display Screen	5-inch transreflective LCD touch screen with 1080 x 720 resolution
Detection Limit	minimum detection limit of 1 ~ 500ppm
Safety	Multiple safety protection, no tests, no radiation; radiation levels at work are far below the international safety standards, and has no sample telemetry, automatic shut X light tube function. Standard radiation shields, thickened wall alloy test instrument
Specialty	Ore special edition analysis software, using intelligent one key test
Convenience of Application	Key intelligent matching the best curve that does not need to select curve
Data Transmission	Digital multi-channel technology, SPI data transmission, quick analysis, high count rate; waterproof and mini USB, and can be connected with a desktop computer
Operating Ambient Humidity	≤90%
Operating Environmental Temperature	-20°C ~ +50°C
Instrument Dimension (L x W x H)	244mm x 90mm x 330mm
Instrument Weight	1.7kg
Intelligent Warning Signal Indicator System	Green light means 'power on', red flashing means 'testing' and yellow flashing means 'malfunction'
Accessories	Three-point military protection box; compression, waterproof and shock absorbant. Universal charger and car charger, 4G SD memory card and card reader. Two lithium batteries and chargers, PDA accessories, radiation shield. Optional accessories: larger battery, seal type test support, Bluetooth printer, mill, manual pressure machine, and other options can be chosen

EDX1800B X-ray Fluorescence Spectrometer for RoHS



Application

- RoHS Testing

Performance advantages

- Down-side X-ray Source : meet the test requirements of samples of different kinds and shapes
- Collimator and filter: the Auto-switch between various collimators and filters to meet the application of different testing methods

Technical specifications

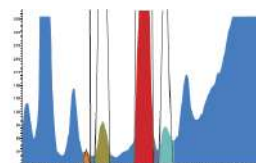
- Measurable elements : S to U
- Limit of detection (LOD) reaches 1ppm
- Sample chamber size : 439mm x 300mm x 50mm
- Instrument size : 550mm x 410mm x 320mm
- Instrument weight : 45kg

Standard configurations

- Movable sample platform
- Signal-to-Noise Enhancer (SNE)
- Electric-cooling Si-PIN detector
- Signal detection electronic circuit
- High and low voltage power
- X-ray tube of high power

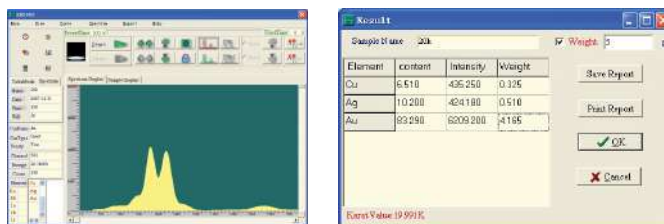


RoHS Testing



Test Results Spectrum

EDX600 Precious Metal Analysis X-Ray Fluorescence Spectrometer



Application fields

To detect precious metals such as Gold (Au), Silver (Ag), Platinum (Pt) and others

Specifications

Measurable elements : Cu Au Pt Pd and Ag
Test time : 60-100s

Configurations

Single sample chamber
High resolution CCD
High and low voltage power supplies
X-ray tube



Testing Report

Sample Name	20k	Test Time	100	Test Date	2007-12-31
Element	Content(%)	Weight(g)			
Cu	6.51	0.325			
Ag	10.2	0.51			
Au	83.29	4.165			
Raw Value	10.991K				
Spectrum					
Sample Photo					
Remark					

Thick800A X-Ray Fluorescence Spectrometer for Plating Thickness



Application fields

Measurement of Plating Thickness

Performance and Characteristics

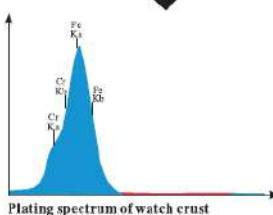
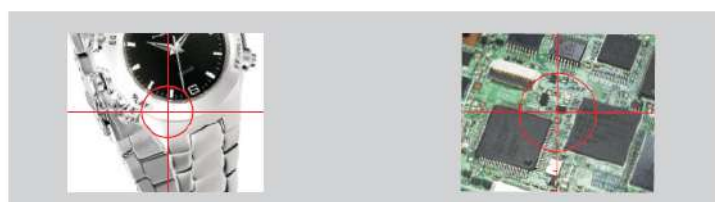
- Measurement of samples with different thickness and irregular shapes
- Collimator is within 0.1mm
- The mouse can control the movable platform; the mouse clicking position is the test point
- High-resolution detector can improve the analysis accuracy
- Excellent ray shielding

Configurations

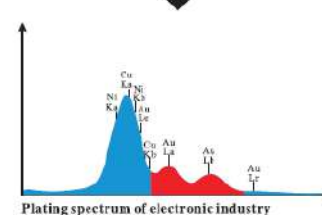
- Open sample chamber
- Double-laser positioning system
- Lead glass shield cap
- 3-D movement is realized by using 2-D movable platform and up-and-down movement of detector and X-ray tube
- High and low voltage power supply
- X-ray tube
- Si-Pin detector

Technical Specifications

- Measurable elements : From S to U
- Simultaneously test 24 elements and 5 layer plating
- Analysis detection limit reaches 2ppm, mini layer is 0.005µm
- Analysis range : 2ppm to 99.9%
- Plating thickness is generally within 50µm (depend on different materials)
- Weight : 90 kg
- Dimension : 576 (W) x 495 (D) x 545 (H)



Matrix	Fe	
The 1st layer	Cr	Thickness 1.74 µm
Tested parts	Watch crust	High voltage 40 kV
Test time	300s	Tube current 500 µA



Matrix	Cu	
The 1st layer	Au	Thickness 1.02 µm
The 2nd layer	Ni	Thickness 6.05 µm
Tested parts	Connected to plug in	High voltage 40 kV
Test time	20s	Tube current 500 µA



Xavis (Korea) specialises in manufacturing, X-ray inspection systems. Xavis aims to provide improvement and security in quality stabilization and reduction in labour cost for companies that performs automated inspection.

X-ray Automatic Vision Inspection System XScan-A100/130



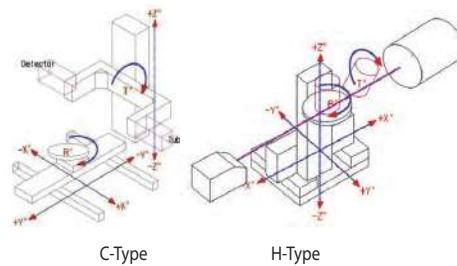
Application

- PCB, PCBA / MLB, Ultra Precision Inspection
- μ BGA, BGA, CSP, ACF, Flip-Chip, FPCB Etc
- Semiconductor, Various selected Printing Functions by customer-oriented
- Engineering Plastic Injection moulding, camera module, and so on
- FDP (Flat Panel Detector) High resolution
- Big PCB Size Inspection (Table size: 500x500mm)
- Real 3D CT Image

Specification		Xscan-A100	Xscan-A130
X-ray tube	Focus Size(standard)	5 μ m	5 μ m
	Voltage /Current/ Power	100kV / 1mA / 12W	130kV /300 μ A / 39W
	Magnification	X212	X487
X-ray detector		2" FPD (flat panel detector)	
Tilt angle		50° (Detector tilt)	
Manipulator	Manipulator	X,Y,Z,Tilt / Rotation (Option)	X,Y,Z,Tilt / Rotation
	Table size	500 x 500mm	
	Max. Sample Loading	5kg	
X-ray leakage dose		1 μ Sv/h or less	
Dimension (W x D x H)		1360x1440x1700	
Machine weight		Aprox.1000kg	



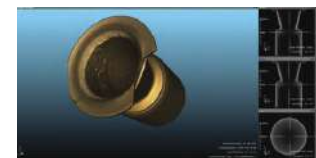
Die-casting, Automotive Components, Best Methods for industrial Inspection Systems



Real Image



Inspection Image (2D)



Inspection Image (CT & 3D)

XSCAN	XSCAN-7630H	XSCAN-7650H	XSCAN-7650C	XSCAN-8225	XSCAN-8350	XSCAN-8450A	XSCAN-8450B
X-ray Tube Type	Closed Type						
Focal Size	5 μ m			0.5mm(small) 1.0mm(large)	1.0mm(small) 3.5mm(large)	0.4mm(small) 1.0mm(large)	1.9mm(small) 3.6mm(large)
Max Tube Voltage	130kV	150kV	225kV	350kV	450kV	450kV	450kV
Tube Power (Small/Large)	39W	75W	450W(small) 900W(large)	1000W(small) 2250W(small)	700W(small) 1500W(small)	960W(small) 2250W(small)	960W(small) 2250W(small)
Detector	9 inch II			8 inch FPD or Line Scan			8 inch FPD
Max. Object Weight	Max. 10 kg	Max. 40kg	40 kg / 80 kg			10kg	
Max. Inspection Object Size	300(ϕ)x400(H) mm	500(ϕ)x600(H)mm	500(ϕ)x600(H)mm	500(ϕ)x800(H) mm		100(ϕ)x350(H)mm	
X-ray Leakage Does	1 μ Sv/h or less						
Dimension (WxDxH)	2100x1800x2100	2100x1800x2300	2600x1940x2100			2100x1600x2000	

Some of the customers reference



RITX-200PW (Waterproof) / RITX-200D Walk-through Metal Detector



The RITX-200PW metal detector is water proof model, it can be operated outside without weather shed. It is a multi-channel metal detector with six overlapping detection zones. The zones create a sequential sine-wave magnetic field within the detection area.

- Divided into 6 overlapped reticulate detecting areas according to the fundamental structure of human body. Adopting the single stimulated frequency technology and forming the symmetrical density of upright magnetic field in the detecting areas. High penetration and sensitivity, avoiding the weak / blind zone of detecting areas.

- Each detecting area bears 200 sensitivity adjusting programs of stages in which specific parameters could be set according to the actual application situation. Without considering the influence of buckle, key, jewelry, and coin etc., it could detect the knife and handgun, and the highest sensitivity is able to check out a metal as large as a clip.

- Installing color lights on the gateposts of four sides to reveal the alarm-ringing district, which is quite straightforward and could reach all direction of view.

Standards Compliance (For RITX-200PW only)

- Conformity with active National Standard GB 15210-94.
- Device refer to safety standard EN60950, conform with standard GB2423.
- Radiation refer to standard EN50081-1, conform with standard GB6833.
- Anti-jamming refer to EN50082-1, conform with standard GB6833.
- Electrical apparatus insulation and dielectric strength conform with standard GB10408.
- CE, RoHs.



	RITX-200PW	RITX-200D
Power supply	110V or 220V 60/50Hz	
Signal frequency	6KHz ~ 9KHz adjustable	
Weight	about 90kg	
Outer frame (mm)	2220(H)x820(W)x610(D)	2220(H)x820(W)x500(D)
Inner frame (mm)	2000(H)x700(W)x610(D)	2000(H)x700(W)x500(D)

Checkweigher SC-IXL Series



Suitable for weight-checking of packing products, to ensure quality standards

High speed, High sensitivity, High Stability Dynamic Weight Checking

- Adopt the imported high sensitivity sensor.
- Stability.

- The sensitivity keeps stably, needless calibration, everyday.
- Auto-dynamic zero tracking technology, which ensures the detecting sensitivity for aquatic product, etc. in the condition of weighing platform change.

Accurate and Efficient Rejector System

- Various kinds of quick rejector systems, catering for rejecting various unqualified products under different production speed.

Professional Human-machine Interface Design

- Full colour touch-screen system. It is simple, intuitive and easy to operate.

User-friendly Features

- Product database-can save up to 100 kinds of products.

- With data statistics function.

- With data export, USB and Ethernet port function.

- Compatible and extensible.

Good Environmental Adaptability and Stability

- Water-proof and dust-proof, IP30/IP66 optional.

Brief User Parameter Setting

- Automatic parameter adjustment, simply input the product parameters and weighing requirements to achieve the parameter setting.

Top-level Craft, Professional Mechanical Design

- Stainless steel cover, processed with sandblasting.

- Built-in hinge design, easy clean.

Specification

Model	SC-IXL-160	SC-IXL-230S	SC-IXL-230L	SC-IXL-300	SC-IXL-400
Detecting Range	10~600g	20~2000g	20~2000g	20~5000g	0.2~10kg
Scale Interval	0.05g	0.1g	0.1g	0.2g	1g
Accuracy (3σ)	±0.1g	±0.2g	±0.2g	±0.5g	±1g
Detecting Speed (Max speed)	250pcs/min	200pcs/min	155pcs/min	140pcs/min	105pcs/min
Belt Speed	70m/min	70m/min	70m/min	70m/min	70m/min
The weighed product size	Width	150mm	220mm	220mm	290mm
	Length	200mm	250mm	350mm	400mm
Weigher platform size	Width	160mm	230mm	230mm	300mm
	Length	280mm	350mm	450mm	500mm
Operation Screen	7-inch Touch LCD Screen				
Product Storage Quantity	100 kinds				
Segments Number of Sorting	2 or 3				
Rejecter	Rejector Optional				
Power Supply	220V (Optional)				
Degree of Protection	IP30/IP54/IP66				
Body Material	Stainless Steel (SUS304)				

Checkweigher SC-IXL Series (500/600)



Specification

Model	SC-IXL-500	SC-IXL-600
Detecting Range	0.5~20kg	1~50kg
Scale Interval	1g	5g
Accuracy (3σ)	±2g	±5g
Detecting Speed (Max speed)	75pcs/min	50pcs/min
Belt Speed	60m/min	60m/min
The weighed product size	Width	490mm
	Length	700mm
Weigher platform size	Width	500mm
	Length	800mm
Operation Screen	7-inch Touch LCD Screen	
Product Storage Quantity	100 kinds	
Segments Number of Sorting	2 or 3	
Rejecter	Rejecter Optional	
Power Supply	220V (Optional)	
Degree of Protection	IP30/IP54/IP66	
Body Material	Stainless Steel (SUS304)	

Multi-Tray Weight Sorting Machine



Value

This sorting machine can weigh the products in the trays dynamically and sort them into different places. Speed of sorting can be adjusted.

Target of Designing

- To help people who are in need of grading and to increase working efficiency
- Mostly used in meat, fishery, fruit and vegetable industries
- For the high speed production lines, such as checking meat grind which requires 300 pcs per minute
- 6 ~ 16 levels of grades to meet requirements of the needs of most customers
- Multiple sizes of the trays for different types products
- Double scales for sticky products

Multi-tray Weight Sorting Machine	Small		Big	
Model	SC-IXL-GWS-8R	SC-IXL-GWS-16R	SC-IXL-GWL-8R	SC-IXL-GWL-12R
Grade of Weight	8 grade	16 grade	8 grade	12 grade
Quantifying Precision	±1%		±2%	
Seperation Capacity	300ppm		200ppm	
Weighing Range	2 ~ 500g		5 ~ 1000g	
Supply Voltage	AC, 220V		Single phase alternating current (AC), 220V ±10%, 450W	
Power Dissipation	400W		-	
Machine Material	SUS304 stainless steel & food grade resin		SUS304 stainless steel & food grade resin	
Size of Machine (L x W x H)	4200mm x 700mm x 1500mm (operating altitude: 800 ~ 950mm)		5200mm x 700mm x 1500mm (operating altitude: 800 ~ 950mm)	
Weight	350kg		450kg	
Protection Grade	IP66		IP66	
Applicable Products	chicken wing roots, wing, leg, abalone, sea cucumber, shrimp, fish, etc.		large pieces of meat, fish, etc.	
Scale Number	1		1	
Tray Size	length: 170mm / 190mm / 220m ; width: 95mm		length: 300m ; width: 150mm	

Established in 1949, Tokyo Automatic Machinery Works Ltd., (TAM) has formed a cross-sectional product-creation team consisting of members from its sales, design and production departments, in order to propose, design and deliver products that provide a never-before, high level of new value. TAM have been supplying various solutions to customers mainly packaging machines since the day of establishment. The foundation of our long history is based on our corporate philosophy "Customers' Trust First".



Helps to gain enhanced productivity with stable operation

- Max. 100bpm is achieved even with Intermittent motion
- Servo driven and 2-link type heater system for end-sealing structure realize a higher seal quality

Easy Operation

- A 5-inch color touch screen with fine viewability
- An easy film change by air-chuck type film reel

Standard equipments

- Two-stage end-sealing motion
- Vacuum chamber type film tenting
- Dual Servo driven vacuum belts

Options

- Auger filler
- Gas flushing device
- Punch hole mechanism
- Various types of printers and others



Servo driven and 2-link type heater system

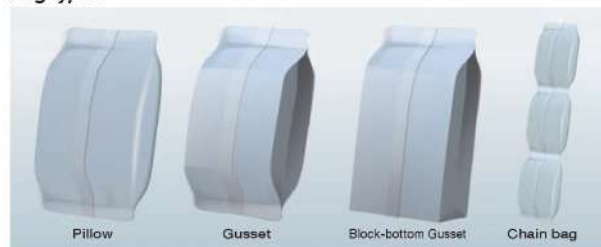


Vacuum chamber type film tenting

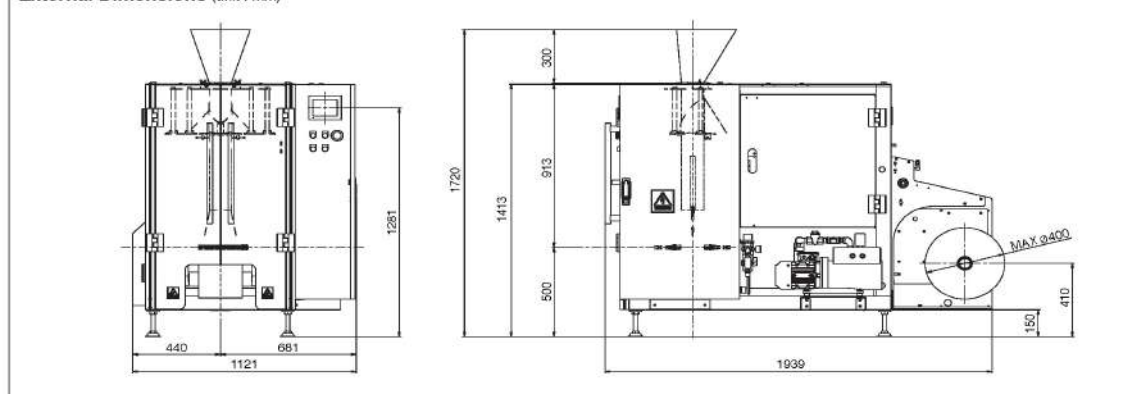
Machine Specifications


Bag Type	Pillow, Gusset, Block-bottom Gusset, Chain bag	
Bag size	W	50~200mm
	L	50~300mm
Packaging Speed	100 bpm/Max	
Power Supply	3-Phase 200V, 50/60Hz, approx. 8.3kVA	
Power Consumption	4.0kW	
Air Consumption	90 Litter (Normal) per min.	
Machine Dimensions	1121(W) x 1939(D) x 1413(H) mm	
Machine Weight	620kg	

Bag types



External Dimensions (unit : mm)






TAN CHONG MOTOR ASSEMBLIES SDN. BHD. (18428-D)

Your Ref: _____
Our Ref: _____ Date: _____

To : Whom May Concern _____ 31st October 2011

"With the assistance of Obsnap Instruments Sdn Bhd, we manage to do our jobs efficiently by using their high quality products / instruments as been promised. Their fast service that been offered also help us in order to get the Instruments as soon as possible and the service team also assist us in giving their best advice and information needed. Thanks a lot from us for your precious assistances and advices"



Shallzam Othman
Manager
Production Department (Paintshop)
Tan Chong Motor Assemblies Sdn Bhd

No. 249, Jalan Segambut, 51200 Kuala Lumpur, Malaysia.
Tel: (6) 03-6236 8888 Fax: (6) 03-6251 5511



X-rite Spectrophotometer Ci62



X-rite Spectrophotometer Ci62



INDUSTRIAL QUALITY MANAGEMENT SDN. BHD. (234438-K)
Manufacturers of Plastic & Metal Components.

Head Office: Lot 7, Kawasan Mile 11, Jalan Duta 234, Seksyen 23, 40000 Shah Alam, Selangor, Malaysia. Tel: 03-55422897 Fax: 03-55422751 (OPERATION) 03-55482534 (SALES)
Branch: Lot 16, Jalan Ambang Perak City, 35000 Tel. Melayu Perak, Malaysia. Tel: 05-4557979 Fax: 05-4557998
Lot 19-25, Kawasan Perindustrian Gasek, 08100 Gasek, Kedah, Malaysia. Tel: 04-4884844 Fax: 04-4884843
E-mail: iqm@iqm.com.my Website: www.iqm.com.my

12 Oct 2011
Obsnap Instruments Sdn Bhd
No 28A, Jalan SS 15/4C,
47500 Subang Jaya,
Selangor, Malaysia.

Dear Sir,
RE: LETTER OF APPRECIATION

It has been a real pleasure working with the professional and courteous staff at Obsnap Instruments Sdn Bhd. The service team of Obsnap goes well beyond the normal call of duty. They always go the extra mile to minimize instrument downtime. We are fortunate to have Obsnap Instruments Sdn Bhd working with us.

Thank you for your dedicated engineers and we are satisfied with your service support.

Yours sincerely,
Your company name



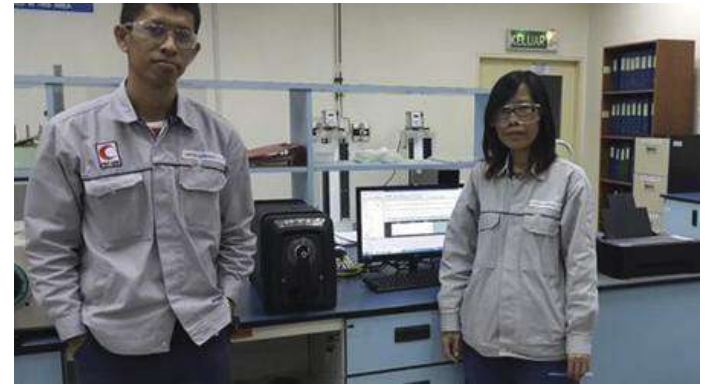
Your Name _____
Position _____
Company Chop _____




INDUSTRIAL QUALITY MANAGEMENT SDN BHD
(REG. NO: 234438-K)
LOT 7, JALAN DUTA 234
SEKSYEN 23, 40000 SHAH ALAM
SELANGOR DARUL EHSAN
TEL NO: 03-55422897 FAX NO: 03-55422751

OUR COMMITMENT
INDUSTRIAL QUALITY MANAGEMENT SDN BHD through the introduction of such instruments, will be recognized as the leading manufacturer of Plastic & Metal Components manufacturing components, providing and ensuring their quality products and services.

"KUALITI BERMULA DARI GAYU"
To be the best in plastic and metal components manufacturer
Inter & Intra Customer Satisfaction is our priority.



X-rite Spectrophotometer Ci7600



X-rite Multi-Angle Spectrophotometer MA94



X-rite Spectrophotometer SP62



X-rite Multi-Angle Spectrophotometer MA94



X-rite Spectrophotometer Ci7600



X-rite RM200QC



X-rite Spectrophotometer Ci60



X-rite Spectrophotometer Ci62



X-rite Multi-Angle Spectrophotometer MA94



X-rite RM200QC



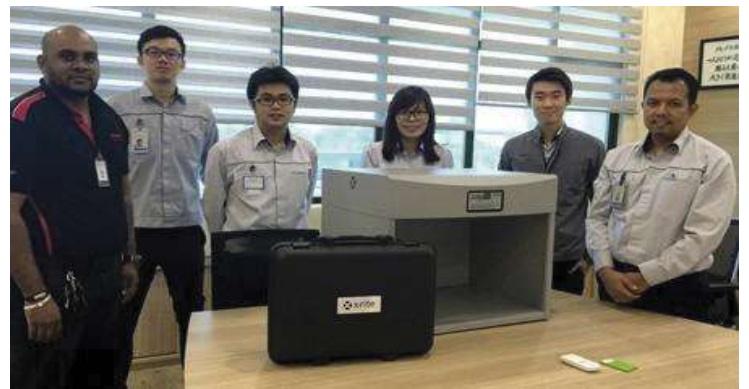
X-rite Spectrophotometer MA94



X-rite Spectrophotometer Ci60



X-rite Spectrophotometer Ci60



X-rite Spectrophotometer Ci64 &
X-rite Colour Assessment Cabinet JudgeQC



X-rite Pantone Colour Assesment Cabinet



Sesotec Metal Detector GLS 600/250



X-rite RM200QC



Sesotec Metal Detector Rapid 5000/100



X-rite Spectrophotometer Ci60



LightView Colour Assessment Cabinet



Sesotec Metal Detector Ascon 600/250



X-rite Spectrophotometer i5



Sesotec Rapid Vario FS100



Skyray XRF Spectrometer EDX 1800B



Sesotec Metal Detector



Sesotec Metal Detector Liquidscan PL40



X-rite Spectrophotometer Ci62



Sesotec Metal Detector Ascon 700/400



Sesotec Metal Detector ELS



Sesotec Metal Detector
Ascon 350/200



Scanline Metal Detector



Sesotec Metal Detector ELS



Colour Theory Presentation



2018 FHA Exhibition in Singapore



Scanline Check Weigher



Sesotec Metal Detector Rapid 5000



X-Rite Multi-Angle Spectrophotometer MA94



X-Rite Exact Standard



X-Rite Spectrophotometer Ci62



X-Rite Spectrophotometer Ci60

hitech
europe

Sample Preparation
Machine and
Metallographic

- Consumables
- Cutter
- Grinder & Polisher
- Mounting Machine

Nabertherm

Laboratory and
Production Furnaces

TechnoDigm
Dispensing and
UV Technology

UV Conveyor

Liquid Dispenser
AD2000

UV Spot Curing System

Dual Component
Dispensing Systems

In-Line Dispensing System

VICTOR
Material Testing Equipments

www.victormaterial.com

Universal Testing Machine, Impact Tester,
Melt Flow Indexer, Polymer, Textile, Leather &
Paper Testing Machine

MERIDIAN

www.meridianinstruments.com

Temperature & Humidity Chamber
Accelerated Weathering Tester, Ozone
Tester, Salt Spray Machine, Fade Tester,
Aging Oven, Oven, Furnace, Vibration
Testing System, Fume Cabinets

ZEISS

The Reference
Machine in the
Compact Class

MICRO Xy

CMM, Portable Measuring
Arm, Profile Projector, Video
Measuring System, Video
Tool-maker Microscope

JS Analytical

reliably accurate

www.jsanalytical.com

Obsnap
the professional
GROUP

JS Analytical Sdn Bhd
29A, Jalan SS 15/4C,
47500 Subang Jaya,
Selangor Darul Ehsan, Malaysia
Tel : +603-5621 5786
Fax : +603-5621 5829
E-mail: sales@obsnap.com
www.obsnapinstruments.com